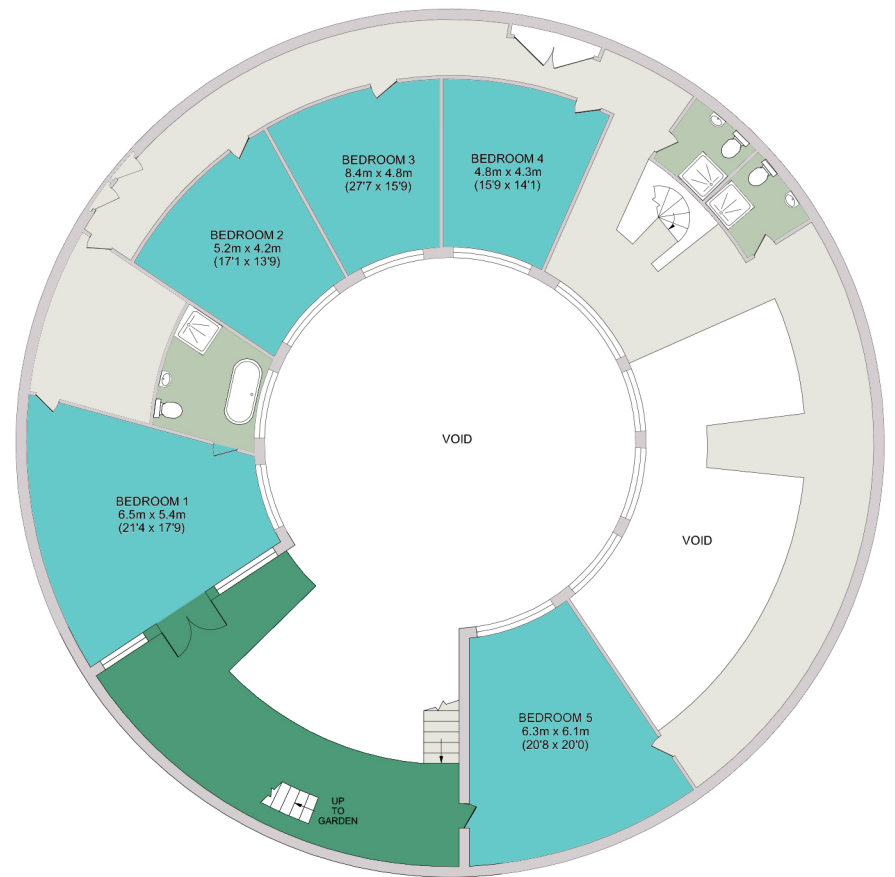




GROUND FLOOR
APPROX. FLOOR
AREA 518.7 SQ.M.
(5584 SQ.FT.)



FIRST FLOOR
APPROX. FLOOR
AREA 458.3 SQ.M.
(4934 SQ.FT.)

Woolbrook Reservoir, Balfours, Sidmouth, EX10 9EF
Approximate internal area 977.1 Sq.M. - (10518 Sq.Ft.)
For identification only - Not to scale.